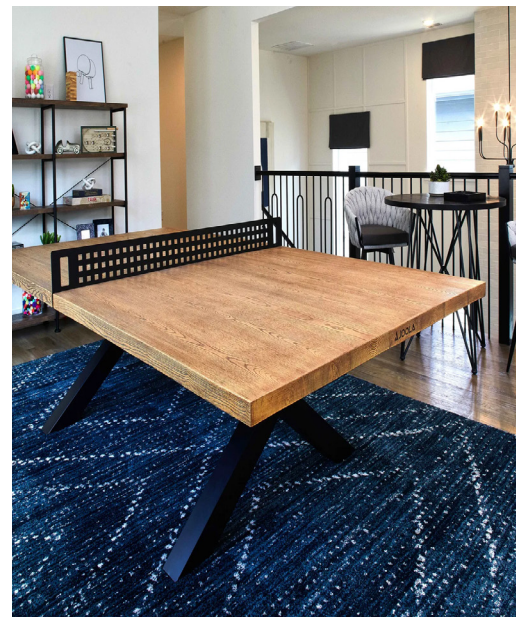




Coastal Bend

Property Tax Rates 2023



COASTAL BEND APPRAISAL DISTRICTS

Aransas County

11 Business Highway 35 North Bypass
Rockport, TX 78382
(361) 729-9733 | www.aransascad.org

Bee County

401 N. Washington Street
Beeville, TX 78102
(361) 358-0193 | www.beecad.org

Cameron County

2021 Amistad Drive
San Benito, TX 78586
(956) 399-9322 | www.cameroncad.org

Hidalgo County

4405 Professional Drive
Edinburg, TX 78539
(956) 381-8466 | www.hidalgoad.org

Jim Wells County

1600 E Main Street, Suite 100
Alice, TX 78332
(361) 668-9656 | www.jimwellscad.org

Kenedy County

365 E La Parra Ave
Sarita, TX 78385
(361) 294-5333 | www.kenedycad.org

Kleburg County

502 E Kleberg Ave
Kingsville, TX 78363
(361) 595-5775 | www.kleberg-cad.com

Live Oak County

205 Bowie Street
George West, TX 78022
(361) 449-2641 | www.liveoakcad.org

McMullen County

207 Ash Street
Tilden, TX 78072
(361) 274-3638 | www.mcmullencad.org

Nueces County

201 N. Chapparral Street
Corpus Christi, TX 78401
(361) 881-9978 | www.nuecescad.org

Refugio County

420 N. Alamo
Refugio, TX 78377
(361) 526-5994 | www.refugiocad.org

San Patricio

1301 E Sinton Street Unit B
Sinton, TX 78387
(361) 364-5402 | www.sanpatcad.org

** Information in this booklet is obtained from outside sources. While deemed reliable, Capital Title makes no claim as to its accuracy. Please contact the proper taxing authority for confirmation.*

** Please note that some cities lie in two counties and/or located in different school districts, and are therefore under different tax rates depending upon their location within the city.*

ABOUT PROPERTY TAXES

Tax Determination

Typically your property is taxed by a county, city, and school district. Under the present property tax system the determination of property values is the responsibility of an appraisal district. To learn which jurisdictions tax your property, contact the appraisal district of the county in which you reside.

Your property is assigned a single appraised value, which is sent to all applicable taxing jurisdictions. The jurisdiction then applies the tax rate set by its governing body to the appraised value. The tax rate multiplied by the appraised value equals the amount of taxes owed.

Exemptions

Several forms of tax relief are available in Texas. Among these various exemptions which may reduce the taxable value of your property. Applying for exemptions is your responsibility. Some exemptions require a new application each year. Contact your appraisal district to learn more about each of the following exemptions:

Homestead Exemption

Over 65 Exemption

Disabled Individual Exemption

Agricultural Exemption

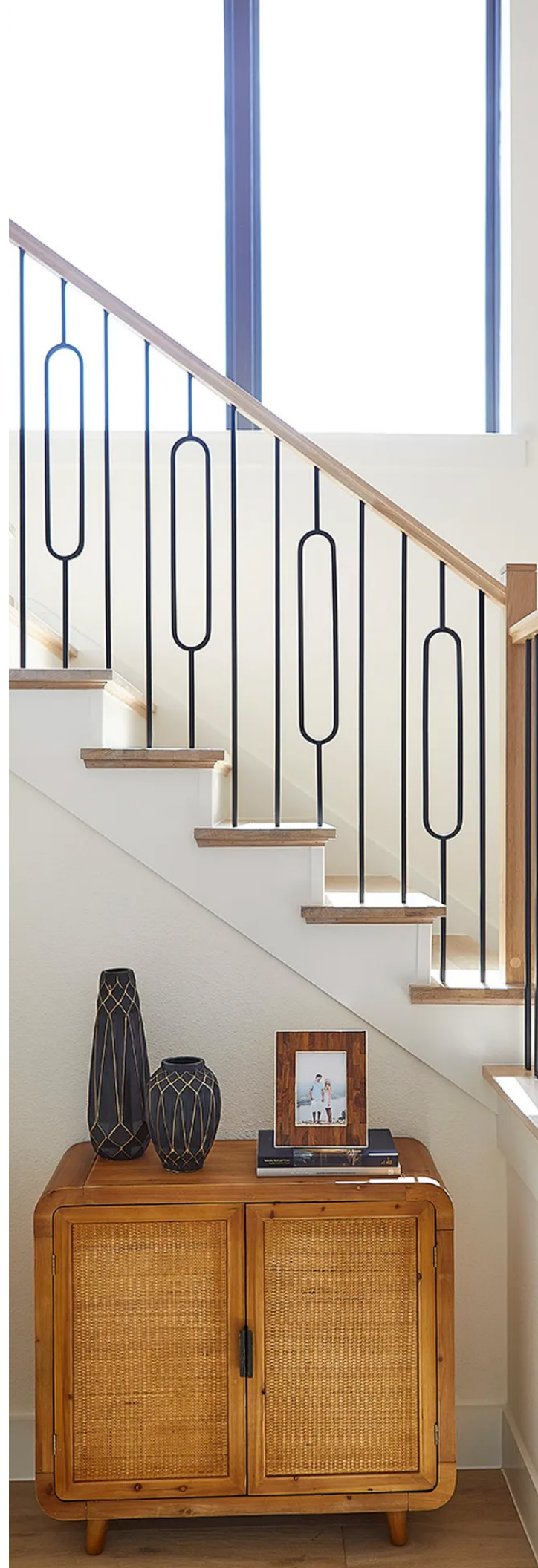
Open Space Exemption

Appeals

You may appeal the value assigned to your property and the exemption allowed by the appraisal district. An appraisal review board in each district has the power to review and adjust property values and to determine exemption status.

Contact your appraisal district or visit: comptroller.texas.gov for more details about the appeal process should you disagree with any action taken by the appraisal district.

For questions about property values, appraisal methods, exemptions, which jurisdictions tax your property or to appeal an appraised value, you should call your county Appraisal District.



Aransas County

Aransas County Jurisdiction

Aransas County	0.392452
Road-Flood	0.049062
Aransas Navigations	0.034041

Cities

Rockport	0.360078
Fulton	0.266875

School Districts

Rockport-Fulton ISD	0.775000
---------------------	----------

Special Districts

Aransas MUD	0.372275
-------------	----------

Bee County

Bee County Jurisdiction

BeeCounty	0.482810
Farm to Market Road	0.002830
Total	0.48564

Cities

Beeville	0.609250
----------	----------

School Districts

Beeville ISD	1.009958
Skidmore ISD	1.194500
Pettus ISD	1.085830
Pawnee ISD	0.710100

Special Districts

Coastal Bend College	0.128930
Beeville Water Supply Dist.	0.070000
Pettus MUD	0.180400
Bee Groundwater Con Dist.	0.002900
Central ESD #1	0.007190
North Bee County ESD #2	0.023520
Pawnee ESD #3	0.006220
South Bee County ESD #4	0.024410

Cameron County

Cameron County Jurisdiction

Cameron County	0.431893
----------------	----------

Cities

Brownsville	0.607987
Bayview	0.250000
Combes	0.730000
Harlingen	0.545519
Indian Lake	0.765000
La Feria	0.760000
Los Indios	0.487570
Los Fresnos	0.685000
Laguna Vista	0.454124
Long Island Village	0.563076
Port Isabel	0.690000
Primera	0.552590
Palm Valley	0.515463
Port of Harlingen	0.022061
Rio Hondo	0.812207
Rancho Viejo	0.450000
San Benito	0.708125
South Padre Island	0.232159

School Districts

Brownsville ISD	1.030964
Harlingen CISD	0.935200
La Feria ISD	0.958330
Los Fresnos CISD	0.900762
Lyford CISD	0.989200
Point Isabel ISD	0.825000
Rio Hondo ISD	1.326000
San Benito CISD	1.058670
Santa Maria ISD	1.311300
Santa Rosa ISD	1.257500
South Texas ISD	0.049200

Special Districts

Brownsville Navigation Dist.	0.025589
Laguna Madre Water Dist.	0.056389
Drainage Dist. #1	0.028900
Drainage Dist. #3	0.142210
Drainage Dist. #4	0.067339
Drainage Dist. #5	0.132783
Drainage Dist. #6	0.160000

Special Districts

Cameron ESD #1	0.073678
Paseo De La Resaca MUD#1	0.365000
Paseo De La Resaca MUD#2	0.330000
Paseo De La Resaca MUD#3	0.370000
Texas Southmost College Dist.	0.119767
Valley MUD #2	0.347064

Hidalgo County

Hidalgo County Jurisdiction

Hidalgo County	0.575000
----------------	----------

Cities

Alamo	0.580100
Alton	0.436700
Edinburg	0.630000
Elsa	0.789700
Edcouch	0.845600
Granjeno	0.845600
La Villa	0.792900
Palmview	0.558600
Mercedes	0.775000
Hidalgo	0.351400
Mission	0.527600
Pharr	0.767600
Penitas	0.556200
La Joya	0.579800
Progreso	0.698000
San Juan	0.676500
Sullivan City	0.500000
Weslaco	0.686700

School Districts

Edcouch-Elsa ISD	1.132500
PSJA ISD	1.018300
La Villa ISD	1.246500
Monte Alto ISD	1.189200
Mercedes ISD	1.096000
McAllen ISD	1.001100
Mission CISD	1.113000
Edinburg CISD	0.875000
La Joya ISD	1.034400

School Districts Continued

Progreso ISD	1.182900
Sharyland ISD	0.957500
Valley View ISD	1.159900
Weslaco ISD	0.946400
South Texas ISD	0.049200
Donna ISD	1.070900
Hidalgo ISD	1.202800
South Texas College	0.156200

Special Districts

Drainage Dist #1	0.113900
EMS Dist #1	0.016900
EMS Dist #2	0.032000
EMS Dist #3	0.015400
EMS Dist #4	0.022500
Red Sands GWC Dist	0.146300

Jim Wells County

Jim Wells County Jurisdiction

Jim Wells County	0.745383
------------------	----------

Cities

Alice	0.492121
Orange Grove	0.568454
Premont	0.518847
San Diego	0.238721

School Districts

Alice ISD	1.228090
Aqua Dulce ISD	0.991000
Ben Bolt ISD	1.347400
La Gloria ISD	0.738000
Orange Grove ISD	1.043100
Premont ISD	1.248100
San Diego ISD	1.238000

Special Districts

Alice Water Authority	0.131743
ESD #1	0.061470
Fresh Water District #1	0.132857
Brush Country Grdwtr Cons	0.011000
Nuec/JWells RFPD #5	0.100000
Kenedy Co Grdwtr Cons	0.013065

Kenedy County

Kenedy Jurisdiction

Kenedy County	0.556376
---------------	----------

School Districts

Kenedy Co Wide School Dist	0.762000
----------------------------	----------

Special Districts

Kenedy Co. Groundwater Con Dist.	0.013065
Kenedy Co. Fire & ESD #1	0.056879

Kleberg County

Kleberg County Jurisdiction

Kleberg County	0.771870
----------------	----------

Cities

Kingsville	0.076000
Corpus Christi	0.599774

School Districts

Kingsville ISD	1.410400
Ricardo ISD	0.757500
Riviera ISD	0.826300
Santa Gertrudis ISD	0.669200

Special Districts

South TX Water Authority	0.070374
Kenedy County Groundwater	0.013065

Nueces County

Nueces County Jurisdiction

Nueces County	0.445800
Farm to Market Road	0.002842

Cities

Agua Dulce	0.470000
Bishop	0.670000
Corpus Christi	0.599774
Driscoll	0.300933
Port Aransas	0.195019
Robstown	0.715539

School Districts

Agua Dulce ISD	0.991000
Banquete ISD	1.194060
Bishop CISD	0.988610
Calallen ISD	1.019900
Corpus Christi ISD	0.969000
Driscoll ISD	1.095197
Flour Bluff ISD	0.768200
London ISD	1.169200
Port Aransas ISD	0.743200
Robstown ISD	1.257500
Tuloso-Midway ISD	0.925200
West Oso ISD	0.976900

Special Districts

Nueces Hospital	0.085242
NC ESD #2	0.030000
NC ESD #3	0.100000
NC ESD #5	0.100000
NC ESD #6	0.060399
STWA	0.070374
Drainage #2	0.327568
Drainage #3	0.146265
NC ESD #1	0.100000
NC ESD #4	0.091563
Downtown Mgmt Dist- Land	0.400000
Downtown Mgmt Dist Improv	0.050000

Refugio County

Refugio County Jurisdiction

Refugio County	0.800000
----------------	----------

Cities

Refugio	0.848264
Austwell	0.199700
Bayside	0.478900
Woodsboro	0.738400

School Districts

Woodsboro ISD M & O	0.778100
Austwell-Tivoli ISD	1.103500
Refugio ISD	0.959200
Woodsboro ISD-I & S	0.499600

Special Districts

Mem Hospital Dist	0.262900
Refugio Co WCID #1	0.504200
Refugio Co WCID #2	0.001110
Refugio Co Drain #1	0.147300
Refugio Groundwater	0.013740

San Patricio County

San Patricio County Jurisdiction

San Patricio County	0.352374
---------------------	----------

Cities

Aransas Pass	0.759365
Gregory	0.755476
Ingleside	0.642061
Ingleside on the Bay	0.196606
Lakeside	0.111412
Mathis	1.098086
Odem	0.540659
Portland	0.638789
Sinton	0.759300
Taft	0.650000

School Districts

Aransas Pass ISD	0.808800
Gregory-Portland ISD	1.112600
Ingleside ISD	0.802700
Odem-Edroy ISD	1.224500
Sinton ISD	1.237500
Taft ISD	1.211100

Special Districts

County Special Drainage District	0.089231 0.050000
-------------------------------------	----------------------



*Information for the Coastal Bend counties of Aransas, Bee,
Cameron, Hidalgo, Jim Wells, Kenedy, Kleburg, Live Oak, McMullen,
Nueces, Refugio and San Patricio*



For more information and resources please visit our website.
www.ctot.com