



Texas Education Agency

SCHOOL ACCOUNTABILITY RATINGS

Austin

TEXAS EDUCATION AGENCY SCHOOL ACCOUNTABILITY RATINGS

(Ratings are based on the 2018-2019 School Year)
Updated August 15, 2019

The overall design of the accountability system evaluates performance according to three domains:

Student Achievement evaluates performance across all subjects for all students, on both general and alternate assessments, College, Career, and Military Readiness (CCMR) indicators, and graduation rates.

School Progress measures district and campus outcomes in two areas: the number of students that grew at least one year academically (or are on track) as measured by STAAR results and the achievement of all students relative to districts or campuses with similar economically disadvantaged percentages.

Closing the Gaps uses disaggregated data to demonstrate differentials among racial/ethnic groups, socioeconomic backgrounds and other factors. The indicators included in this domain, as well as the domain's construction, align the state accountability system with the Every Student Succeeds Act (ESSA).

Who is Rated?

Districts and campuses with students enrolled in the fall of the 2018–19 school year as reported for the TSDS PEIMS October snapshot are assigned a state accountability rating.

Districts

Beginning the first year they report fall enrollment, school districts and open-enrollment charter schools are rated based on the aggregate results of students in their campuses. Districts without any students enrolled in the grades for which STAAR assessments are administered (3–12) are assigned the rating label of Not Rated.

Campuses

Beginning the first year they report fall enrollment, campuses and open-enrollment charter schools, including alternative education campuses (AECs), are rated based on the performance of their students. For the purposes of assigning accountability ratings, campuses that do not serve any grade level for which the STAAR assessments are administered are paired with campuses in their district that serve students who take STAAR.

Rating Labels

Districts and campuses receive an overall rating, as well as a rating for each domain. The 2019 rating labels are as follows.

Districts

- A, B, C, or D: Assigned for overall performance and for performance in each domain to districts and campuses (including those evaluated under alternative education accountability [AEA]) that meet the performance target for the letter grade
- F: Assigned for overall performance and for performance in each domain to districts and campuses (including AEA) that do not meet the performance target to earn at least a D
- Not Rated: Assigned to districts and campuses that—under certain, specific circumstances—do not receive a rating

Single-Campus Districts

A school district or charter school comprised of only one campus that shares the same 2019 performance data with its only campus must meet the performance targets required for the campus in order to demonstrate acceptable performance. For these single-campus school districts and charter schools, the 2019 performance targets applied to the campus are also applied to the district, ensuring that both the district and campus receive identical ratings.

In a few specific circumstances, a district or campus does not receive a rating. When this occurs, a district or campus is given one of the following labels.

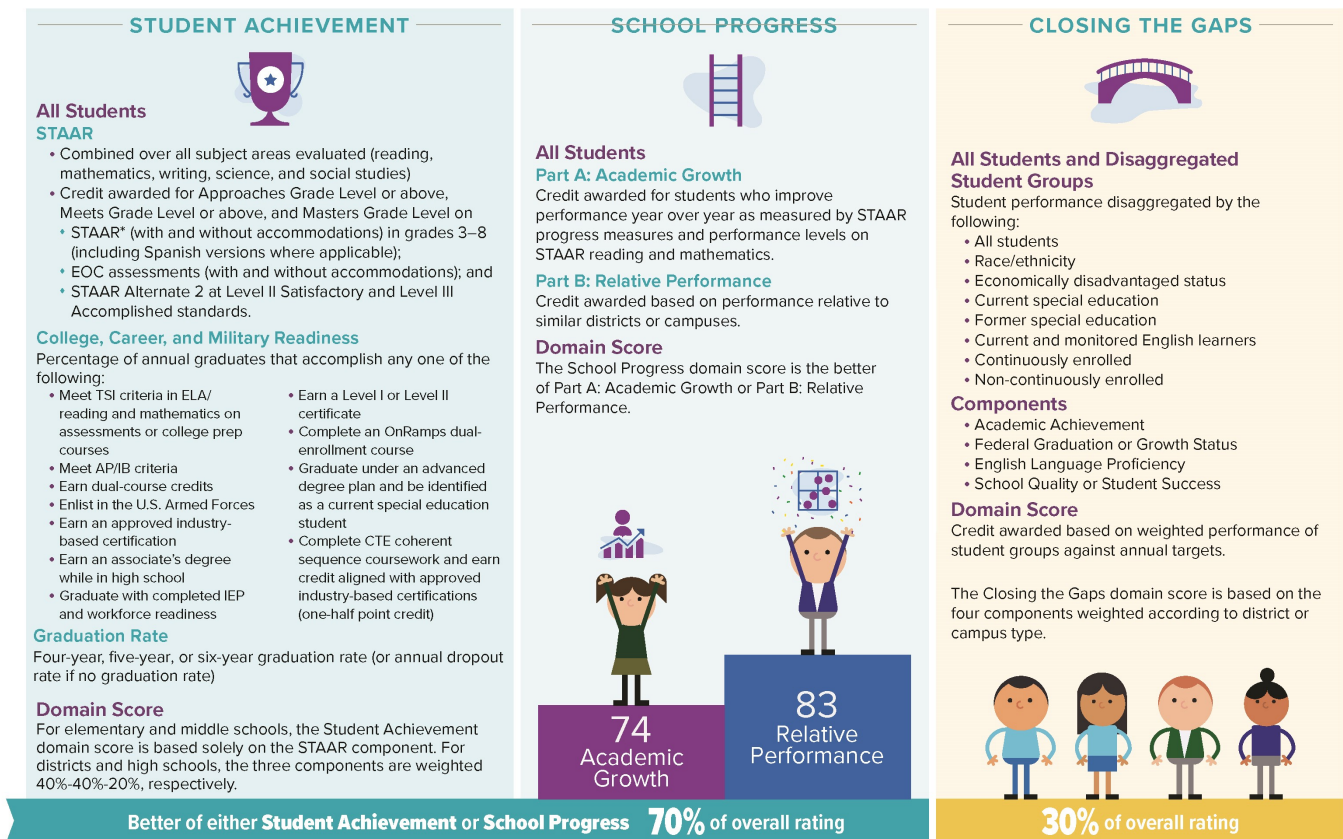
Not Rated indicates that a district or campus does not receive a rating for one or more of the following reasons:

- The district or campus has no data in the accountability subset.
- The district or campus has insufficient data to assign a rating.
- The district operates only residential facilities.
- The campus is a Juvenile Justice Alternative Education Program (JJAEP).
- The campus is a Disciplinary Alternative Education Program (DAEP).
- The campus is a residential facility.
- The commissioner otherwise determines that the district or campus will not be rated.

Not Rated: Data Integrity Issues indicates data accuracy or integrity have compromised performance results, making it impossible to assign a rating. The assignment of a Not Rated: Data Integrity Issues label may be permanent or temporary pending investigation.

Not Rated: Annexation indicates that the campus is in its first school year after annexation by another district and, therefore, is not rated, as allowed by the annexation agreement with the agency.

OVERVIEW OF THE 2019 STATE ACCOUNTABILITY SYSTEM



Distinction designations are awarded to campuses in ELA/reading, mathematics, science, social studies, Academic Growth, and Closing the Gaps. Distinction designations are awarded to campuses and districts in Postsecondary Readiness. Campuses must be rated Met Standard overall to be eligible for distinction designations. Districts rated F overall and alternative education accountability campuses are not eligible for distinction designations.

*STAAR results from EL students in their first year in U.S. schools are excluded from accountability calculations. STAAR results from EL students in their second year in U.S. schools are included via the EL performance measure. STAAR Alternate 2 results are included without regard to number of years in U.S. schools. For more information, see the 2019 Accountability Manual.

Source: Texas Education Agency

The information herein is obtained from outside sources and Capital Title makes no guarantee as to its accuracy. For more information please contact school districts directly.

FLORENCE ISD		WILLIAMSON COUNTY						florenceisd.net		306 College Ave., Florence, TX 76527			254-793-2850		
CAMPUS NAME	STUDENTS	OVERALL RATING	STUDENT ACHIEVEMENT RATING	SCHOOL PROGRESS RATING	ACADEMIC GROWTH RATING	RELATIVE PERFORMANCE	CLOSING THE GAPS RATING	DISTINCTIONS							
								READING	MATH	SCIENCE	SOCIAL STUDIES	STUDENT PROGRESS	CLOSING THE GAPS	POST-SEC READINESS	
DISTRICT	1,085	C	B	C	C	C	C								
FLORENCE EL	488	C	C	C	C	C	D								
FLORENCE H S	336	C	C	C	D	C	C	Earned		Earned					
FLORENCE MIDDLE	260	C	C	C	C	D	C								
WILLIAMSON COUNTY JJAEP	1	N/R	N/R	N/R	N/R	N/R	N/R								
GEORGETOWN ISD		WILLIAMSON COUNTY						georgetownisd.org		507 E. University Ave., Georgetown, TX 78626			512-943-5004		
CAMPUS NAME	STUDENTS	OVERALL RATING	STUDENT ACHIEVEMENT RATING	SCHOOL PROGRESS RATING	ACADEMIC GROWTH RATING	RELATIVE PERFORMANCE	CLOSING THE GAPS RATING	DISTINCTIONS							
								READING	MATH	SCIENCE	SOCIAL STUDIES	STUDENT PROGRESS	CLOSING THE GAPS	POST-SEC READINESS	
DISTRICT	11,732	B	B	B	F	B	C								
ANNIE PURL EL	728	C	F	C	C	F	D								
CARVER EL	850	D	D	D	D	F	F								
CHARLES A FORBES MIDDLE	603	D	C	F	F	F	F								
CHIP RICHARTE H S	86	B	A	D	D	N/R	F								
DELL PICKETT EL	330	C	C	C	C	D	C								
DOUGLAS BENOLD MIDDLE	826	C	B	D	D	D	D								
EAST VIEW H S	1,670	B	B	B	F	B	C			Earned					
FROST EL	359	F	D	D	D	F	F								
GEORGE WAGNER MIDDLE	734	F	D	F	F	F	F								
GEORGETOWN ALTER PROG	16	N/R	N/R	N/R	N/R	N/R	N/R								
GEORGETOWN H S	1,977	B	B	C	F	C	C								
JAMES E MITCHELL EL	728	C	D	C	C	F	D								
JAMES TIPPIT MIDDLE	530	F	F	F	F	F	F								
JO ANN FORD EL	545	B	B	C	C	F	C								
PAT COOPER EL	583	F	D	F	F	F	F								
RAYE MCCOY EL	606	B	B	C	C	F	C								
VILLAGE EL	536	C	C	C	C	C	C								
WILLIAMSON CO J J A E P	16	N/R	N/R	N/R	N/R	N/R	N/R								
WILLIAMSON CO JUVENILE DETENTION C	9	N/R	N/R	N/R	N/R	N/R	N/R								
GRANGER ISD		WILLIAMSON COUNTY						grangerisd.net		300 North Colorado, Granger, TX 76530			512-859-2173		
CAMPUS NAME	STUDENTS	OVERALL RATING	STUDENT ACHIEVEMENT RATING	SCHOOL PROGRESS RATING	ACADEMIC GROWTH RATING	RELATIVE PERFORMANCE	CLOSING THE GAPS RATING	DISTINCTIONS							
								READING	MATH	SCIENCE	SOCIAL STUDIES	STUDENT PROGRESS	CLOSING THE GAPS	POST-SEC READINESS	
DISTRICT	445	B	B	B	C	B	C								
GRANGER SCHOOL	445	B	B	B	C	B	C			Earned					
HAYS CISD		HAYS COUNTY						hayscisd.net		21003 Interstate 35 Frontage Rd. Kyle, TX 78640			512-268-2141		
CAMPUS NAME	STUDENTS	OVERALL RATING	STUDENT ACHIEVEMENT RATING	SCHOOL PROGRESS RATING	ACADEMIC GROWTH RATING	RELATIVE PERFORMANCE	CLOSING THE GAPS RATING	DISTINCTIONS							
								READING	MATH	SCIENCE	SOCIAL STUDIES	STUDENT PROGRESS	CLOSING THE GAPS	POST-SEC READINESS	
DISTRICT	19,859	B	B	B	B	B	B								
ALTER IMPACT CTR	47	N/R	N/R	N/R	N/R	N/R	N/R								
ARMANDO CHAPA MIDDLE	753	C	C	B	B	B	C						Earned	Earned	
BLANCO VISTA EL	627	B	C	B	B	B	B			Earned					
BUDA EL	601	C	C	B	B	D	C								
CAMINO REAL EL	763	B	C	B	B	B	C						Earned		
CARPENTER HILL EL	632	B	A	B	B	C	B		Earned	Earned					
D J RED SIMON MIDDLE	757	D	D	D	D	D	D								
DR T C MCCORMICK JR MIDDLE	899	D	C	C	D	C	D								
ELM GROVE EL	875	A	A	B	B	D	A							Earned	
ERIC DAHLSTROM MIDDLE	785	A	A	B	B	D	A							Earned	
HEMPHILL EL	274	C	D	C	C	C	C								
JACK C HAYS H S	2,961	B	B	B	B	B	B		Earned				Earned		
KYLE EL	634	C	C	B	B	C	C								
LAURA B NEGLELY EL	805	A	A	A	A	B	A	Earned	Earned				Earned	Earned	Earned
LAURA B WALLACE MIDDLE	800	C	C	C	C	C	D						Earned		
LEHMAN H S	2,634	B	C	B	B	B	C								
LIVE OAK ACADEMY	200	B	B	B	B	N/R	D								
R C BARTON MIDDLE	718	A	A	B	B	B	A			Earned	Earned		Earned	Earned	
RALPH PFLUGER EL	701	B	A	B	B	B	B	Earned					Earned	Earned	Earned
SCIENCE HALL EL	564	B	C	B	B	C	C						Earned		
SUSIE FUENTES EL	627	B	C	B	B	C	B			Earned					
TOBIAS EL	610	C	C	C	C	C	C								
TOM GREEN EL	753	B	C	B	B	D	C							Earned	
UHLAND EL	839	B	D	B	B	D	C							Earned	
HUTTO ISD		WILLIAMSON COUNTY						hipponation.org		200 College Street, Hutto, TX 78634			512-759-3771		
CAMPUS NAME	STUDENTS	OVERALL RATING	STUDENT ACHIEVEMENT RATING	SCHOOL PROGRESS RATING	ACADEMIC GROWTH RATING	RELATIVE PERFORMANCE	CLOSING THE GAPS RATING	DISTINCTIONS							
								READING	MATH	SCIENCE	SOCIAL STUDIES	STUDENT PROGRESS	CLOSING THE GAPS	POST-SEC READINESS	
DISTRICT	7,578	B	B	B	C	B	B								
COTTONWOOD CREEK EL	650	B	C	C	C	C	B	84							
FARLEY MIDDLE	916	C	B	C	C	D	C	77							
HOWARD NORMAN EL	749	C	C	C	C	D	C	77							
HUTTO EL	446	C	C	B	B	F	C	75							
HUTTO H S	2,090	B	B	B	D	B	C	79							Earned
HUTTO MIDDLE	853	C	C	C	D	C	C	70		Earned					
NADINE JOHNSON EL	423	C	C	D	D	F	D	63							
RAY EL	715	C	C	D	D	D	C	75							
VETERANS HILL EL	735	C	C	C	C	C	B	80							
WILLIAMSON CO ACADEMY	1	N/R	N/R	N/R	N/R	N/R	N/R	.							

JARRELL ISD		WILLIAMSON COUNTY						jarrellisd.org	312 N. 5th Street, Jarrell, TX 76537				512-746-2124	
CAMPUS NAME	STUDENTS	OVERALL RATING	STUDENT ACHIEVEMENT RATING	SCHOOL PROGRESS RATING	ACADEMIC GROWTH RATING	RELATIVE PERFORMANCE	CLOSING THE GAPS RATING	DISTINCTIONS						
								READING	MATH	SCIENCE	SOCIAL STUDIES	STUDENT PROGRESS	CLOSING THE GAPS	POST-SEC READINESS
DISTRICT	1,894	B	B	B	F	B	C							
JARRELL EL	548	D	N/R	N/R	N/R	N/R	N/R							
JARRELL H S	505	B	B	B	C	B	C							
JARRELL INT	428	D	D	D	D	F	D							
JARRELL MIDDLE	412	F	D	D	F	D	F							
LOTT DETENTION CENTER	1	N/R	N/R	N/R	N/R	N/R	N/R							
JOHNSON CITY ISD		BLANCO COUNTY						jc.txed.net	303 North LBJ Drive, Johnson City, TX 78636				830-868-7410	
CAMPUS NAME	STUDENTS	OVERALL RATING	STUDENT ACHIEVEMENT RATING	SCHOOL PROGRESS RATING	ACADEMIC GROWTH RATING	RELATIVE PERFORMANCE	CLOSING THE GAPS RATING	DISTINCTIONS						
								READING	MATH	SCIENCE	SOCIAL STUDIES	STUDENT PROGRESS	CLOSING THE GAPS	POST-SEC READINESS
DISTRICT	650	B	B	B	B	B	B							
LYNDON B JOHNSON EL	265	C	C	B	C	B	C							
LYNDON B JOHNSON H S	216	B	B	C	C	C	B	Earned						
LYNDON B JOHNSON MIDDLE	169	A	B	B	B	C	A		Earned	Earned		Earned	Earned	
LAGO VISTA ISD		TRAVIS COUNTY						lagovistaisd.net	8039 Bar-K Ranch Road, Lago Vista, TX 78645				512-267-8300	
CAMPUS NAME	STUDENTS	OVERALL RATING	STUDENT ACHIEVEMENT RATING	SCHOOL PROGRESS RATING	ACADEMIC GROWTH RATING	RELATIVE PERFORMANCE	CLOSING THE GAPS RATING	DISTINCTIONS						
								READING	MATH	SCIENCE	SOCIAL STUDIES	STUDENT PROGRESS	CLOSING THE GAPS	POST-SEC READINESS
DISTRICT	1,529	A	A	C	C	C	B							
LAGO VISTA EL	387	A	A	B	N/R	B	A	Earned					Earned	Earned
LAGO VISTA H S	505	A	A	C	C	C	A	Earned		Earned			Earned	
LAGO VISTA INT	245	B	B	C	D	C	C							
LAGO VISTA MIDDLE	392	B	B	C	C	F	C							
LAKE TRAVIS ISD		TRAVIS COUNTY						ltsidschools.org	3322 Ranch Road 620 South Austin, TX 78738				512-533-6000	
CAMPUS NAME	STUDENTS	OVERALL RATING	STUDENT ACHIEVEMENT RATING	SCHOOL PROGRESS RATING	ACADEMIC GROWTH RATING	RELATIVE PERFORMANCE	CLOSING THE GAPS RATING	DISTINCTIONS						
								READING	MATH	SCIENCE	SOCIAL STUDIES	STUDENT PROGRESS	CLOSING THE GAPS	POST-SEC READINESS
DISTRICT	10,695	A	A	B	B	B	A							
BEE CAVE EL	796	B	A	B	B	D	B							
HUDSON BEND MIDDLE	1,134	A	A	B	B	B	B			Earned				
LAKE POINTE EL	697	A	A	B	B	B	A			Earned		Earned	Earned	
LAKE TRAVIS EL	866	B	C	B	B	C	B							
LAKE TRAVIS H S	3,212	A	A	B	B	B	B	Earned		Earned				
LAKE TRAVIS MIDDLE	1,544	B	A	D	D	D	C							
LAKEWAY EL	692	A	A	A	A	B	A	Earned		Earned		Earned	Earned	Earned
SERENE HILLS EL	881	A	A	B	B	D	A					Earned	Earned	
WEST CYPRESS HILLS EL	873	B	A	C	C	D	C							
LAMPASAS ISD		LAMPASAS COUNTY						lisdtx.org	207 West 8th Street Lampasas, TX 76550				512-556-6224	
CAMPUS NAME	STUDENTS	OVERALL RATING	STUDENT ACHIEVEMENT RATING	SCHOOL PROGRESS RATING	ACADEMIC GROWTH RATING	RELATIVE PERFORMANCE	CLOSING THE GAPS RATING	DISTINCTIONS						
								READING	MATH	SCIENCE	SOCIAL STUDIES	STUDENT PROGRESS	CLOSING THE GAPS	POST-SEC READINESS
DISTRICT	3,337	B	B	B	C	B	B							
HANNA SPRINGS EL	643	B	C	B	B	B	B					Earned	Earned	Earned
KLINE WHITIS EL	413	C	C	C	C	C	C							
LAMPASAS H S	990	B	B	B	C	B	C	Earned		Earned	Earned			
LAMPASAS MIDDLE	761	C	C	C	D	C	D							
TAYLOR CREEK EL	530	D	D	D	D	F	D							
LEANDER ISD		WILLIAMSON COUNTY						leandersid.org	204 W. South Street, PO Box 218 Leander, TX 78646				512-570-0000	
CAMPUS NAME	STUDENTS	OVERALL RATING	STUDENT ACHIEVEMENT RATING	SCHOOL PROGRESS RATING	ACADEMIC GROWTH RATING	RELATIVE PERFORMANCE	CLOSING THE GAPS RATING	DISTINCTIONS						
								READING	MATH	SCIENCE	SOCIAL STUDIES	STUDENT PROGRESS	CLOSING THE GAPS	POST-SEC READINESS
DISTRICT	39,939	B	A	B	B	A	B							
ADA MAE FAUBION EL	436	B	C	B	B	D	C							
ARTIE L HENRY MIDDLE	1,364	A	A	B	B	B	A				Earned		Earned	
BAGDAD EL	607	C	C	B	B	C	C							
BLOCK HOUSE CREEK EL	625	B	B	C	C	C	B							
C C MASON EL	624	C	C	C	C	F	C							
CANYON RIDGE MIDDLE	1,265	A	A	B	B	B	A			Earned			Earned	
CEDAR PARK H S	2,081	A	A	B	D	B	B							Earned
CEDAR PARK MIDDLE	1,314	A	A	B	B	C	A							
CHARLOTTE COX EL	528	A	A	B	B	C	A							
CHRISTINE CAMACHO EL	773	D	C	C	C	F	D							
CYPRESS EL	640	A	A	B	B	C	A					Earned		
DEER CREEK EL	656	A	A	A	A	C	A			Earned			Earned	
FLORENCE W STILES MIDDLE	1,404	A	A	B	B	C	A						Earned	
FOUR POINTS MIDDLE	775	A	A	B	B	B	B	Earned		Earned				
GLENN H S	1,587	C	C	C	F	C	C							
GRANDVIEW HILLS EL	469	A	A	B	B	B	A	Earned	Earned			Earned	Earned	
JIM PLAIN EL	937	C	C	D	D	F	D							
KNOX WILEY MIDDLE	1,072	B	B	C	C	C	B							
LAURA WELCH BUSH EL	666	A	A	A	A	B	A		Earned	Earned		Earned		Earned
LEANDER EXTENDED OPPORTUNITY	57	N/R	N/R	N/R	N/R	N/R	N/R							
LEANDER H S	2,152	A	A	B	D	B	B							
LEANDER MIDDLE	1,111	B	B	B	B	B	B		Earned		Earned	Earned	Earned	
LOIS F GIDDENS EL	581	C	C	C	C	F	D							
MONTA JANE AKIN EL	845	A	A	B	B	D	A							
NEW HOPE H S	73	A	A	N/R	N/R	N/R	N/R							

LEANDER ISD		WILLIAMSON COUNTY						leandersid.org	204 W. South Street, PO Box 218 Leander, TX 78646				512-570-0000		
CAMPUS NAME	STUDENTS	OVERALL RATING	STUDENT ACHIEVEMENT RATING	SCHOOL PROGRESS RATING	ACADEMIC GROWTH RATING	RELATIVE PERFORMANCE	CLOSING THE GAPS RATING	DISTINCTIONS							
								READING	MATH	SCIENCE	SOCIAL STUDIES	STUDENT PROGRESS	CLOSING THE GAPS	POST-SEC READINESS	
OFFICER LEONARD A REED EL	799	B	C	B	B	C	B						Earned		
PARKSIDE EL	956	A	A	B	B	D	A								
PATRICIA KNOWLES EL	596	C	C	C	C	D	C								
PAULINE NAUMANN EL	478	B	B	C	C	D	A								
PLEASANT HILL EL	627	C	C	D	D	F	C								
RIVER PLACE EL	771	B	A	B	B	C	C								
RIVER RIDGE EL	684	A	A	B	B	B	A		Earned					Earned	Earned
RONALD REAGAN EL	875	B	A	B	B	D	B								
ROUSE H S	1,688	A	A	B	D	B	A							Earned	
RUNNING BRUSHY MIDDLE	1,227	B	B	C	C	C	C								
RUTLEDGE EL	904	A	A	A	A	B	A						Earned	Earned	
STEINER RANCH EL	549	A	A	A	A	C	A								
VANDEGRIFT H S	2,708	A	A	B	C	B	B	Earned	Earned	Earned	Earned				Earned
VISTA RIDGE H S	2,383	A	A	B	C	B	A	Earned	Earned	Earned	Earned			Earned	Earned
WESTSIDE EL	565	B	A	B	B	D	B								
WHITESTONE EL	788	A	B	A	A	D	A						Earned		
WILLIAM J WINKLEY EL	685	A	A	B	B	F	A								
WILLIAMSON CO ACADEMY	13	N/R	N/R	N/R	N/R	N/R	N/R								
WILLIAMSON COUNTY DETENTION CENTER	1	N/R	N/R	N/R	N/R	N/R	N/R								
LIBERTY HILL ISD		WILLIAMSON COUNTY						libertyhill.txed.net	301 Forrest Street Liberty Hill 78642				512-260-5580		
CAMPUS NAME	STUDENTS	OVERALL RATING	STUDENT ACHIEVEMENT RATING	SCHOOL PROGRESS RATING	ACADEMIC GROWTH RATING	RELATIVE PERFORMANCE	CLOSING THE GAPS RATING	DISTINCTIONS							
								READING	MATH	SCIENCE	SOCIAL STUDIES	STUDENT PROGRESS	CLOSING THE GAPS	POST-SEC READINESS	
DISTRICT	4,378	A	A	B	B	B	B								
BILL BURDEN EL	670	C	C	C	C	D	C								
LIBERTY HILL EL	368	C	B	D	F	D	D								
LIBERTY HILL H S	1,227	A	A	C	D	C	B								
LIBERTY HILL INT	710	B	A	C	C	C	B								
LIBERTY HILL J H	681	A	A	A	A	B	A						Earned	Earned	
RANCHO SIENNA EL	720	B	A	C	C	C	B								
WILLIAMSON CO ACADEMY	2	N/R	N/R	N/R	N/R	N/R	N/R								
LOCKHART ISD		CALDWELL COUNTY						lockhartisd.org	419 Bois D'Arc Street Lockhart 78644				512-398-0000		
CAMPUS NAME	STUDENTS	OVERALL RATING	STUDENT ACHIEVEMENT RATING	SCHOOL PROGRESS RATING	ACADEMIC GROWTH RATING	RELATIVE PERFORMANCE	CLOSING THE GAPS RATING	DISTINCTIONS							
								READING	MATH	SCIENCE	SOCIAL STUDIES	STUDENT PROGRESS	CLOSING THE GAPS	POST-SEC READINESS	
DISTRICT	6,101	C	C	B	C	B	C								
ALMA BREWER STRAWN EL	497	F	F	D	D	F	F								
BLUEBONNET EL	572	D	F	C	C	F	D								
CLEAR FORK EL	450	C	D	C	C	D	D								
GEORGE W CARVER EARLY EDUCATION CENTER	313	C	N/R	N/R	N/R	N/R	N/R								
LOCKHART H S	1,641	C	C	C	C	C	C								
LOCKHART J H	1,491	C	C	C	C	C	D								
LOCKHART PRIDE H S	49	A	B	B	B	N/R	N/R								
NAVARRO EL	517	C	D	C	C	D	D								
PLUM CREEK EL	571	C	C	C	C	C	C			Earned					
LOMETA ISD		LAMPASAS COUNTY						lometaisd.org	100 N. 8th Street, Lometa 78653				512-752-3384		
CAMPUS NAME	STUDENTS	OVERALL RATING	STUDENT ACHIEVEMENT RATING	SCHOOL PROGRESS RATING	ACADEMIC GROWTH RATING	RELATIVE PERFORMANCE	CLOSING THE GAPS RATING	DISTINCTIONS							
								READING	MATH	SCIENCE	SOCIAL STUDIES	STUDENT PROGRESS	CLOSING THE GAPS	POST-SEC READINESS	
DISTRICT	289	B	B	A	C	A	C								
LOMETA SCHOOL	289	B	B	A	C	A	C			Earned	Earned				
LULING ISD		CALDWELL COUNTY						luling.txed.net/	212 Bowie Street, Luling 78648				830-875-3191		
CAMPUS NAME	STUDENTS	OVERALL RATING	STUDENT ACHIEVEMENT RATING	SCHOOL PROGRESS RATING	ACADEMIC GROWTH RATING	RELATIVE PERFORMANCE	CLOSING THE GAPS RATING	DISTINCTIONS							
								READING	MATH	SCIENCE	SOCIAL STUDIES	STUDENT PROGRESS	CLOSING THE GAPS	POST-SEC READINESS	
DISTRICT	1,399	C	C	C	D	C	D								Earned
GILBERT GERDES J H	306	F	F	F	F	F	F								
LEONARD SHANKLIN EL	425	D	F	D	D	F	D								
LULING H S	415	B	B	B	B	C	C								
LULING PRI	253	D	N/R	N/R	N/R	N/R	N/R								
MANOR ISD		TRAVIS COUNTY						manorisd.net	10335 US Hwy 290E, Manor 78653				512-278-4000		
CAMPUS NAME	STUDENTS	OVERALL RATING	STUDENT ACHIEVEMENT RATING	SCHOOL PROGRESS RATING	ACADEMIC GROWTH RATING	RELATIVE PERFORMANCE	CLOSING THE GAPS RATING	DISTINCTIONS							
								READING	MATH	SCIENCE	SOCIAL STUDIES	STUDENT PROGRESS	CLOSING THE GAPS	POST-SEC READINESS	
DISTRICT	9,445	B	C	B	C	B	C								
BLAKE MANOR EL	556	B	C	B	B	B	B	Earned		Earned			Earned	Earned	Earned
BLUEBONNET TRAIL EL	550	A	C	A	A	B	B		Earned	Earned			Earned	Earned	Earned
DECKER EL	431	B	C	B	B	C	C						Earned		
DECKER MIDDLE	715	D	D	D	D	D	D								
LAGOS EL	396	B	B	B	B	B	A		Earned	Earned			Earned	Earned	Earned
MANOR EL	294	C	D	C	C	C	C								
MANOR EXCEL ACADEMY	93	C	C	N/R	N/R	N/R	N/R								
MANOR H S	1,975	C	C	B	C	B	C								
MANOR MIDDLE	771	F	F	F	F	F	F								
MANOR NEW TECH HIGH	431	A	A	A	B	A	B		Earned	Earned			Earned	Earned	
MANOR NEW TECH MIDDLE	696	C	C	C	F	C	D	Earned			Earned				

MANOR ISD		TRAVIS COUNTY						manorisd.net		10335 US Hwy 290E, Manor 78653				512-278-4000	
CAMPUS NAME	STUDENTS	OVERALL RATING	STUDENT ACHIEVEMENT RATING	SCHOOL PROGRESS RATING	ACADEMIC GROWTH RATING	RELATIVE PERFORMANCE	CLOSING THE GAPS RATING	DISTINCTIONS							
								READING	MATH	SCIENCE	SOCIAL STUDIES	STUDENT PROGRESS	CLOSING THE GAPS	POST-SEC READINESS	
NEW PRE-K CENTER	13	C	N/R	N/R	N/R	N/R	N/R								
OAK MEADOWS EL	672	C	D	C	C	C	C								
PIONEER CROSSING EL	581	B	C	B	C	B	C								
PRESIDENTIAL MEADOWS EL	621	C	D	B	B	D	C								
SHADOWGLEN EL	650	C	C	C	C	C	C								
MARBLE FALLS ISD		BURNET COUNTY						marbelfallsisd.org		1800 Colt Circle Marble Falls, Tx 78654				830-693-4357	
CAMPUS NAME	STUDENTS	OVERALL RATING	STUDENT ACHIEVEMENT RATING	SCHOOL PROGRESS RATING	ACADEMIC GROWTH RATING	RELATIVE PERFORMANCE	CLOSING THE GAPS RATING	DISTINCTIONS							
								READING	MATH	SCIENCE	SOCIAL STUDIES	STUDENT PROGRESS	CLOSING THE GAPS	POST-SEC READINESS	
DISTRICT	4,255	B	B	A	D	A	C								
COLT EL	622	B	C	B	B	B	B				Earned		Earned	Earned	
FALLS CAREER H S	37	B	B	N/R	N/R	N/R	N/R								
HIGHLAND LAKES EL	607	C	D	C	C	D	C								
MARBLE FALLS EL	597	B	C	B	B	B	C			Earned	Earned		Earned		
MARBLE FALLS H S	1,220	B	B	B	D	B	C			Earned	Earned	Earned			Earned
MARBLE FALLS MIDDLE	952	D	C	C	F	C	F								
SPICEWOOD EL	220	A	A	A	A	B	A	Earned	Earned				Earned	Earned	Earned
MCDADE ISD		BASTROP COUNTY						mcdadeisd.com		156 Marlin St., McDade, TX 78650				512-273-2101	
CAMPUS NAME	STUDENTS	OVERALL RATING	STUDENT ACHIEVEMENT RATING	SCHOOL PROGRESS RATING	ACADEMIC GROWTH RATING	RELATIVE PERFORMANCE	CLOSING THE GAPS RATING	DISTINCTIONS							
								READING	MATH	SCIENCE	SOCIAL STUDIES	STUDENT PROGRESS	CLOSING THE GAPS	POST-SEC READINESS	
DISTRICT	382	B	B	B	C	B	C								
MCDADE EL	235	B	B	B	B	B	C	Earned					Earned		Earned
MCDADE H S	147	C	C	C	D	C	C	Earned		Earned					
PFLUGERVILLE ISD		TRAVIS COUNTY						pflisd.net		1401 W. Pecan Street Pflugerville, TX 78660				512-594-0000	
CAMPUS NAME	STUDENTS	OVERALL RATING	STUDENT ACHIEVEMENT RATING	SCHOOL PROGRESS RATING	ACADEMIC GROWTH RATING	RELATIVE PERFORMANCE	CLOSING THE GAPS RATING	DISTINCTIONS							
								READING	MATH	SCIENCE	SOCIAL STUDIES	STUDENT PROGRESS	CLOSING THE GAPS	POST-SEC READINESS	
DISTRICT	25,361	B	B	B	C	A	B								
BROOKHOLLOW EL	462	C	C	D	D	D	D								
CALDWELL EL	611	B	C	B	C	B	C								
CELE MIDDLE	1,123	B	B	B	D	B	C				Earned				
COPPERFIELD EL	410	C	C	B	C	B	C								
DEARING EL	619	C	C	C	D	C	C								
DELCO PRI	597	C	N/R	N/R	N/R	N/R	N/R								
DESSAU EL	542	C	D	C	C	D	C								
DESSAU MIDDLE	847	D	D	C	F	C	F					Earned			
HENDRICKSON H S	2,396	A	A	B	B	B	B					Earned	Earned		
HIGHLAND PARK EL	621	A	A	B	B	B	B								
JOHN B CONNALLY H S	1,731	B	B	B	D	B	C	Earned	Earned	Earned	Earned				
KELLY LANE MIDDLE	1,109	B	A	C	C	C	B								
MOTT EL	826	B	B	B	B	C	B								
MURCHISON EL	859	A	A	A	A	B	A				Earned		Earned		
NORTHWEST EL	529	F	D	D	F	D	F								
PARK CREST MIDDLE	909	B	B	B	C	B	B					Earned	Earned	Earned	Earned
PARMER LANE EL	474	A	B	A	A	B	B	Earned		Earned			Earned	Earned	
PFLUGERVILLE EL	512	B	B	B	B	B	B	Earned					Earned		
PFLUGERVILLE H S	2,056	B	B	B	C	B	B	Earned	Earned	Earned	Earned			Earned	Earned
PFLUGERVILLE MIDDLE	1,040	C	C	C	F	C	D								
RIOJAS EL	687	B	A	C	C	C	C								
RIVER OAKS EL	489	B	C	A	A	B	B						Earned		
ROWE LANE EL	794	A	A	B	B	B	A						Earned		Earned
RUTH BARRON EL	641	B	C	B	C	B	C								
SPRINGHILL EL	587	C	C	C	C	C	C								
TIMMERMAN EL	542	D	D	F	F	F	F								
TRAVIS CO J J A E P	2	N/R	N/R	N/R	N/R	N/R	N/R								
WEISS H S	1,383	B	B	B	D	B	C	Earned		Earned	Earned				
WESTVIEW MIDDLE	763	C	C	C	D	C	D								
WIELAND EL	387	B	C	B	C	B	C				Earned				Earned
WINDERMERE EL	417	B	B	B	B	B	B	Earned	Earned				Earned	Earned	
WINDERMERE PRI	396	B	N/R	N/R	N/R	N/R	N/R								
PRAIRIE LEE ISD		CALDWELL COUNTY						plisd.net/		6910 San Marcos HWY Prairie Lea, TX 78661				512-488-2370	
CAMPUS NAME	STUDENTS	OVERALL RATING	STUDENT ACHIEVEMENT RATING	SCHOOL PROGRESS RATING	ACADEMIC GROWTH RATING	RELATIVE PERFORMANCE	CLOSING THE GAPS RATING	DISTINCTIONS							
								READING	MATH	SCIENCE	SOCIAL STUDIES	STUDENT PROGRESS	CLOSING THE GAPS	POST-SEC READINESS	
DISTRICT	216	C	C	B	D	B	C								
PRAIRIE LEA SCHOOL	216	C	C	B	D	B	C								
ROUND ROCK ISD		WILLIAMSON COUNTY						roundrockisd.org		1311 Round Rock Ave. Round Rock, Texas 78681				512-464-5000	
CAMPUS NAME	STUDENTS	OVERALL RATING	STUDENT ACHIEVEMENT RATING	SCHOOL PROGRESS RATING	ACADEMIC GROWTH RATING	RELATIVE PERFORMANCE	CLOSING THE GAPS RATING	DISTINCTIONS							
								READING	MATH	SCIENCE	SOCIAL STUDIES	STUDENT PROGRESS	CLOSING THE GAPS	POST-SEC READINESS	
DISTRICT	50,204	B	B	B	B	A	B								
ANDERSON MILL EL	590	C	C	C	D	C	C								
BLACKLAND PRAIRIE EL	828	A	A	A	A	C	A								
BLUEBONNET EL	408	C	D	C	C	D	C								
BRUSHY CREEK EL	706	A	A	B	B	C	A	Earned						Earned	

ROUND ROCK ISD		WILLIAMSON COUNTY						roundrockisd.org	1311 Round Rock Ave. Round Rock, Texas 78681				512-464-5000		
CAMPUS NAME	STUDENTS	OVERALL RATING	STUDENT ACHIEVEMENT RATING	SCHOOL PROGRESS RATING	ACADEMIC GROWTH RATING	RELATIVE PERFORMANCE	CLOSING THE GAPS RATING	DISTINCTIONS							
								READING	MATH	SCIENCE	SOCIAL STUDIES	STUDENT PROGRESS	CLOSING THE GAPS	POST-SEC READINESS	
C D FULKES MIDDLE	770	D	C	C	F	C	F								
CACTUS RANCH EL	957	A	A	A	A	A	A	Earned	Earned	Earned			Earned	Earned	Earned
CALDWELL HEIGHTS EL	799	C	C	C	C	C	C								
CANYON CREEK EL	438	A	A	A	A	A	A	Earned	Earned	Earned			Earned	Earned	Earned
CANYON VISTA MIDDLE	1,406	A	A	A	A	A	A	Earned	Earned	Earned	Earned		Earned	Earned	Earned
CEDAR RIDGE H S	2,753	B	A	B	C	B	C	Earned		Earned					Earned
CEDAR VALLEY MIDDLE	1,296	A	A	B	B	B	A				Earned				
CHANDLER OAKS EL	567	A	A	B	B	B	B	Earned	Earned						Earned
CHISHOLM TRAIL MIDDLE	943	B	B	B	C	B	C			Earned	Earned				
CLAUDE BERKMAN EL	478	B	C	B	C	B	B								
DEEPWOOD EL	385	B	B	C	D	C	C								
DEERPARK MIDDLE	923	B	B	B	C	B	C	Earned		Earned	Earned	Earned	Earned	Earned	Earned
DOUBLE FILE TRAIL EL	631	B	B	B	B	B	B	Earned							Earned
EL DAEP	9	N/R	N/R	N/R	N/R	N/R	N/R								
ELSA ENGLAND EL	1,224	A	A	A	A	B	A	Earned	Earned				Earned	Earned	Earned
FERN BLUFF EL	609	A	A	A	A	C	A	Earned		Earned			Earned	Earned	
FOREST CREEK EL	841	A	A	C	C	C	A							Earned	
FOREST NORTH EL	394	C	C	C	C	C	D								
GATTIS EL	745	C	C	C	C	D	C								
GREAT OAKS EL	756	A	A	B	B	B	A	Earned		Earned				Earned	Earned
HOPEWELL MIDDLE	1,216	B	A	B	C	B	C								
JAMES GARLAND WALSH MIDDLE	1,344	A	A	A	A	B	A	Earned	Earned	Earned	Earned	Earned	Earned	Earned	Earned
JOE LEE JOHNSON EL	803	C	C	C	C	D	C								
JOLLYVILLE EL	432	B	B	B	B	C	B								
KATHY CARAWAY EL	870	A	A	B	B	B	B								
LAUREL MOUNTAIN EL	730	A	A	A	A	B	A	Earned	Earned	Earned			Earned	Earned	Earned
LINDA HERRINGTON EL	1,107	A	A	B	B	B	A			Earned			Earned	Earned	Earned
LIVE OAK EL	592	C	C	C	C	D	C								
MCNEIL H S	2,673	A	A	B	D	B	B	Earned	Earned	Earned					Earned
NEYSA CALLISON EL	781	F	D	D	F	D	F								
NOEL GRISHAM MIDDLE	642	B	A	B	C	B	C	Earned			Earned				Earned
OLD TOWN EL	715	A	B	C	C	C	A								
PATSY SOMMER EL	1,251	A	A	A	A	B	A	Earned	Earned				Earned	Earned	Earned
PEARSON RANCH MIDDLE	882	A	A	B	B	B	B	Earned	Earned	Earned	Earned	Earned	Earned	Earned	Earned
PFC ROBERT P HERNANDEZ MIDDLE	755	D	C	C	D	C	F								
POND SPRINGS EL	588	B	B	D	D	D	C								
PURPLE SAGE EL	481	A	A	A	A	B	A						Earned	Earned	Earned
RIDGEVIEW MIDDLE	1,370	A	A	B	B	B	B								
ROUND ROCK H S	3,501	A	A	B	C	B	B							Earned	Earned
ROUND ROCK OPPORT CTR DAEP	59	N/R	N/R	N/R	N/R	N/R	N/R								
RRISD EARLY COLLEGE H S	288	A	A	A	C	A	A			Earned	Earned				
SPICEWOOD EL	846	A	A	A	A	B	A	Earned	Earned				Earned	Earned	Earned
STONY POINT H S	2,598	B	B	B	F	B	C								Earned
SUCCESS H S	324	C	B	B	B	N/R	F								
TERAVISTA EL	867	A	A	C	C	C	B			Earned					Earned
UNION HILL EL	768	B	C	B	B	B	B						Earned	Earned	
VIC ROBERTSON EL	437	C	C	C	C	C	C								
WELLS BRANCH EL	477	C	C	D	D	D	D								
WESTWOOD H S	2,756	A	A	B	B	B	B	Earned	Earned	Earned	Earned				Earned
WILLIAMSON COUNTY CORE-JJAEF	11	N/R	N/R	N/R	N/R	N/R	N/R								
WILLIAMSON COUNTY JUVENILE DETENTION	8	N/R	N/R	N/R	N/R	N/R	N/R								
XENIA VOIGT EL	576	D	D	D	D	D	D								
SAN MARCOS CISD		HAYS COUNTY						smcisid.net	631 Mill Street San Marcos, TX 78666				512-393-6700		
CAMPUS NAME	STUDENTS	OVERALL RATING	STUDENT ACHIEVEMENT RATING	SCHOOL PROGRESS RATING	ACADEMIC GROWTH RATING	RELATIVE PERFORMANCE	CLOSING THE GAPS RATING	DISTINCTIONS							
								READING	MATH	SCIENCE	SOCIAL STUDIES	STUDENT PROGRESS	CLOSING THE GAPS	POST-SEC READINESS	
DISTRICT	8,086	C	C	C	F	C	C								
BONHAM PRE-K SCHOOL	419	B	N/R	N/R	N/R	N/R	N/R								
BOWIE EL	542	C	D	C	C	D	C								
CROCKETT EL	599	B	C	B	B	B	C	Earned	Earned						Earned
DEZAVALA EL	567	C	D	C	C	D	C								
GOODNIGHT MIDDLE	1,036	D	C	C	F	C	F								
HERNANDEZ EL	623	C	C	C	D	C	D	Earned							
MELENDEZ EL	587	C	D	C	C	C	C								
MILLER MIDDLE	791	D	C	C	F	C	F								Earned
SAN MARCOS H S	2,307	C	C	C	F	C	C								
TRAVIS EL	615	F	F	F	F	F	F								
SMITHVILLE ISD		BASTROP COUNTY						smithvilleisd.org	PO Box 479, Smithville, TX 78957				512-237-2487		
CAMPUS NAME	STUDENTS	OVERALL RATING	STUDENT ACHIEVEMENT RATING	SCHOOL PROGRESS RATING	ACADEMIC GROWTH RATING	RELATIVE PERFORMANCE	CLOSING THE GAPS RATING	DISTINCTIONS							
								READING	MATH	SCIENCE	SOCIAL STUDIES	STUDENT PROGRESS	CLOSING THE GAPS	POST-SEC READINESS	
DISTRICT	1,800	B	B	B	C	B	C								
BROWN PRI	442	D	N/R	N/R	N/R	N/R	N/R								
SMITHVILLE EL	387	D	C	C	C	C	D								
SMITHVILLE H S	547	B	B	B	C	B	B								
SMITHVILLE J H	424	C	C	B	D	B	C	Earned							

TAYLOR ISD		WILLIAMSON COUNTY						taylorisd.org	3101 N. Main St. Taylor, TX 76574					512-365-1391	
CAMPUS NAME	STUDENTS	OVERALL RATING	STUDENT ACHIEVEMENT RATING	SCHOOL PROGRESS RATING	ACADEMIC GROWTH RATING	RELATIVE PERFORMANCE	CLOSING THE GAPS RATING	DISTINCTIONS							
								READING	MATH	SCIENCE	SOCIAL STUDIES	STUDENT PROGRESS	CLOSING THE GAPS	POST-SEC READINESS	
DISTRICT	3,181	B	B	B	D	B	C								
LEGACY EARLY COLLEGE H S	190	A	A	A	B	A	A							Earned	
MAIN STREET INT	435	C	C	C	C	C	C								
NAOMI PASEMANN EL	634	D	D	D	N/R	D	D								
TAYLOR H S	841	C	C	C	D	C	C								
TAYLOR MIDDLE	691	D	C	C	D	C	F					Earned			
TH JOHNSON EL	390	D	N/R	N/R	N/R	N/R	N/R								
THRALL ISD		WILLIAMSON COUNTY						thrallisd.com	201 S Bounds Thrall, TX 76578					512-898-0062	
CAMPUS NAME	STUDENTS	OVERALL RATING	STUDENT ACHIEVEMENT RATING	SCHOOL PROGRESS RATING	ACADEMIC GROWTH RATING	RELATIVE PERFORMANCE	CLOSING THE GAPS RATING	DISTINCTIONS							
								READING	MATH	SCIENCE	SOCIAL STUDIES	STUDENT PROGRESS	CLOSING THE GAPS	POST-SEC READINESS	
DISTRICT	734	A	A	B	A	B	B								
THRALL EL	292	C	C	D	D	D	D	Earned	Earned						
THRALL H S	222	A	A	B	B	C	A				Earned	Earned	Earned	Earned	
THRALL MIDDLE	219	A	B	A	A	B	B			Earned		Earned	Earned		
WILLIAMSON COUNTY JUVENILE DETENTION	1	N/R	N/R	N/R	N/R	N/R	N/R								
WIMBERLEY ISD		HAYS COUNTY						wimberleyisd.net	951 FM 2325 Wimberley, TX 78676					512-847-2414	
CAMPUS NAME	STUDENTS	OVERALL RATING	STUDENT ACHIEVEMENT RATING	SCHOOL PROGRESS RATING	ACADEMIC GROWTH RATING	RELATIVE PERFORMANCE	CLOSING THE GAPS RATING	DISTINCTIONS							
								READING	MATH	SCIENCE	SOCIAL STUDIES	STUDENT PROGRESS	CLOSING THE GAPS	POST-SEC READINESS	
DISTRICT	2,490	A	A	A	B	A	B								
DANFORTH J H	590	B	A	C	C	C	B			Earned					
JACOB'S WELL EL	700	B	B	B	B	D	B								
SCUDDER PRI	416	B	N/R	N/R	N/R	N/R	N/R								
WIMBERLEY H S	784	B	A	B	D	B	C			Earned	Earned				Earned



Greater Austin Area | School Ratings

For the Counties of Bastrop, Blanco, Burnet, Caldwell, Hays, Lampasas, Travis, & Williamson

Updated August 2019

www.ctot.com